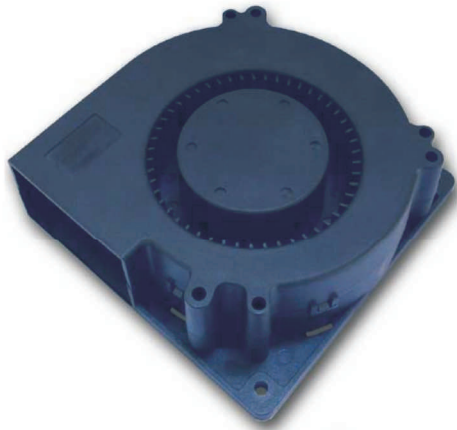


C12032 BLOWER SERIES



SIZE :

120x120x32mm (4.72"x4.72"x1.26")

CONSTRUCTION :

Glass fiber reinforced plastic:

Impeller and housing PBT are UL 94V-0 rating

OPERATING TEMPERATURE :

Ball bearing - 30°C to + 75°C

*Minimum ambient temperature -15°C , admissible for a short time at -30°C ; without reaching dew point.

Sleeve bearing - 10°C to + 60°C

FUNCTION :

frequency generator or rotation detection signal option

WEIGHT :

289 grams

Specifications

Specifications are subject to change without notice

MODEL NO.	BEARING	RATED VOLTAGE	RATED CURRENT	RATED INPUT POWER	SPEED R.P.M.	MAX. AIR FLOW		MAX. AIR PRESSURE		NOISE dB-A
		VDC	A	W		m ³ min	CFM	mmH ₂ O	IN H ₂ O	
CB1203212L	Ball	12	0.36	4.32	2000	0.860	30.37	12.12	0.477	48.90
CS1203212L	Sleeve									
CB1203212M	Ball	12	0.80	9.60	2500	0.990	34.97	19.32	0.761	53.30
CS1203212M	Sleeve									
CB1203212H	Ball	12	1.35	16.20	3000	1.309	46.21	39.48	1.554	57.30
CS1203212H	Sleeve									
CB1203224L	Ball	24	0.24	5.76	2000	0.860	30.37	12.12	0.477	48.90
CS1203224L	Sleeve									
CB1203224M	Ball	24	0.34	8.16	2500	0.990	34.97	19.32	0.761	53.30
CS1203224M	Sleeve									
CB1203224H	Ball	24	0.90	21.60	3000	1.309	46.21	39.48	1.554	57.30
CS1203224H	Sleeve									
CB1203248L	Ball	48	0.15	7.20	2000	0.860	30.37	12.12	0.477	48.90
CS1203248L	Sleeve									
CB1203248M	Ball	48	0.24	11.52	2500	0.990	34.97	19.32	0.761	53.30
CS1203248M	Sleeve									
CB1203248H	Ball	48	0.75	36.00	3000	1.309	46.21	39.48	1.554	57.30
CS1203248H	Sleeve									

*Long life bearing is available

