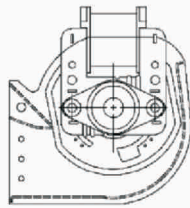
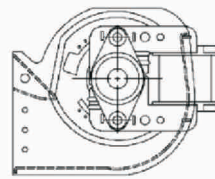


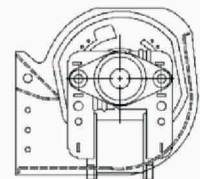
Y



YS



YH



YX

Model	Spec.			Size(mm)	Rated Voltage V	Rated Frequency Hz	Rated Current A	Input Power w	Speed r.p.m	Static Pressure mmAq	Maximun Air Flow m <sup>3</sup> /min	Noise dBA	Safety Approval			Weight g
	A	B	C										UL	CCC	CE	
CE48180A11	188	154	247	110	60	0.22	11.5	1300	1.4	1.06	40	○		○	660	
CE48180A22				220	50	0.10	12.5	1300	1.4	1.06	40	○	○	○		
CE48250A11	250	216	319	110	60	0.38	22	1600	1.6	2.25	46	○		○	720	
CE48250A22				220	50	0.22	23	1600	1.6	2.25	46	○	○	○		
CE48300A11	300	266	269	110	60	0.41	24	1300	1.8	1.78	41	○		○	760	
CE48300A22				220	50	0.19	23	1300	1.8	1.78	41	○	○	○		
CE48350A11	348	314	417	110	60	0.40	25	1400	2.0	2.63	42	○		○	790	
CE48350A22				220	50	0.22	26	1400	2.0	2.63	42	○	○	○		
CE48420A11	418	384	487	110	60	0.39	24	1300	2.2	2.5	48	○		○	820	
CE48420A22				220	50	0.19	25	1300	2.2	2.5	48	○	○	○		